

A PLAT OF LE PARC

LYING IN SEC. 23, TWP. 40 S., RGE. 42 E.
MARTIN COUNTY, FLORIDA

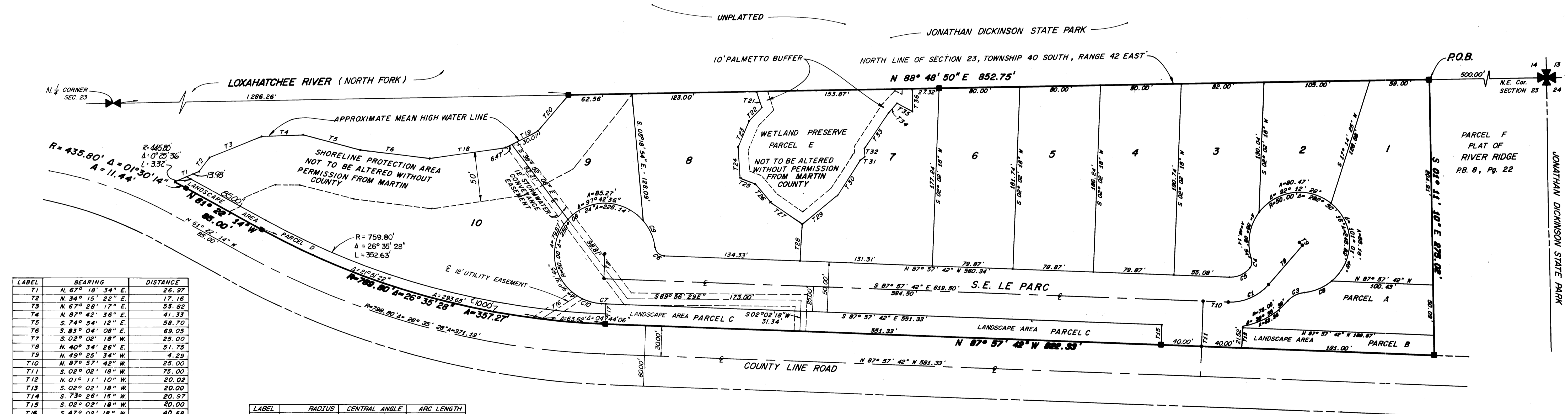
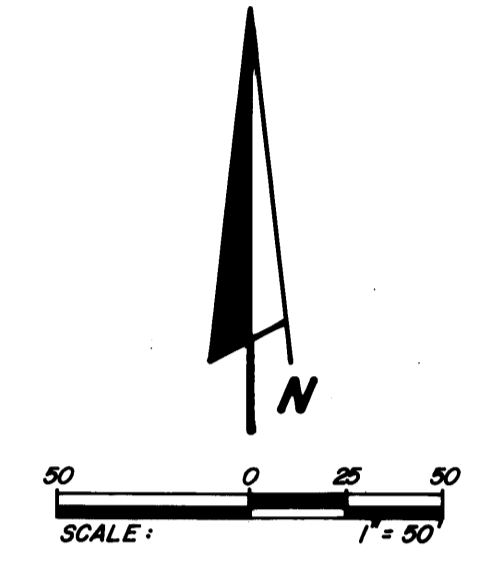
AUGUST, 1984

I, Louise V. Isaacs, Clerk of the Circuit Court of Martin County, Florida, hereby certify that this Plat was filed for record in Plat Book 9, Page 83, Martin County, Florida, Public Records, this day of _____, 1984.

Louise V. Isaacs, Clerk
Circuit Court
Martin County, Florida

By: _____
Deputy Clerk

File No. _____



LABEL	BEARING	DISTANCE
T1	N. 67° 18' 34" E.	26.97
T2	N. 34° 15' 22" E.	17.16
T3	N. 67° 28' 17" E.	55.82
T4	N. 87° 42' 38" E.	41.33
T5	S. 74° 54' 12" E.	58.70
T6	S. 83° 04' 08" E.	69.05
T7	S. 02° 02' 10" W.	25.00
T8	N. 40° 34' 26" E.	51.75
T9	N. 49° 25' 34" W.	4.29
T10	N. 87° 57' 42" W.	25.00
T11	S. 02° 02' 18" W.	75.00
T12	N. 01° 11' 10" W.	20.02
T13	S. 02° 02' 18" W.	20.00
T14	S. 73° 26' 15" W.	20.97
T15	S. 02° 02' 18" W.	20.00
T16	S. 47° 02' 18" W.	40.58
T17	S. 02° 02' 18" W.	10.00
T18	N. 81° 37' 58" E.	76.04
T19	N. 61° 28' 22" E.	36.48
T20	N. 59° 44' 22" E.	46.63
T21	S. 29° 04' 18" E.	17.40
T22	S. 46° 10' 17" W.	18.28
T23	S. 23° 14' 04" W.	28.47
T24	S. 06° 47' 18" E.	31.89
T25	S. 70° 59' 06" E.	14.70
T26	S. 37° 13' 35" E.	23.34
T27	S. 64° 26' 18" E.	38.81
T28	S. 02° 02' 18" W.	35.96
T29	N. 51° 45' 42" E.	45.50
T30	N. 32° 29' 14" E.	42.00
T31	N. 48° 14' 11" E.	6.53
T32	N. 07° 35' 09" W.	7.90
T33	N. 33° 02' 04" E.	42.10
T34	N. 42° 01' 51" E.	13.16
T35	S. 62° 30' 32" E.	17.14
T36	N. 00° 21' 46" W.	23.04

LABEL	RADIUS	CENTRAL ANGLE	ARC LENGTH
C1	50.00	51° 27' 52"	44.81
C2	445.80	02° 18' 42"	17.99
C3	25.00	43° 37' 51"	19.04
C4	10.00	58° 24' 23"	10.19
C5	25.00	92° 15' 53"	22.80
C6	10.00	80° 24' 21"	14.03
C7	749.80	00° 19' 37"	4.28
C8	50.00	34° 26' 06"	30.05
C9	50.00	31° 50' 53"	27.79
C10	50.00	38° 03' 10"	33.21

PLAT OF
RIVER RIDGE
P.B. 8, Pg. 22

THERE WILL BE NO ACCESS EXCEPT
FROM S.E. LE PARC.
THERE WILL BE NO LOT SPLITS
EXCEPT TO CREATE LARGER LOTS.

BEARING BASE:
THE NORTH LINE OF SECTION 23 IS TAKEN AS
BEING N 88° 48' 50" E, AND ALL OTHER BEARINGS
ARE RELATIVE THERETO.

• = P.C.P., PERMANENT CONTROL POINT
■ = P.R.M., PERMANENT REFERENCE MONUMENT

LINDAHL BROWNING, FERRARI & HELLSTROM, INC. Consulting Engineers, Planners & Surveyors JUPITER, FLORIDA STUART, FLORIDA FORT PIERCE, FLORIDA	2	2
	83-056	